

HIAB **XS** 800 Capacity 77 tm



Product brochure



Redefining high capacity

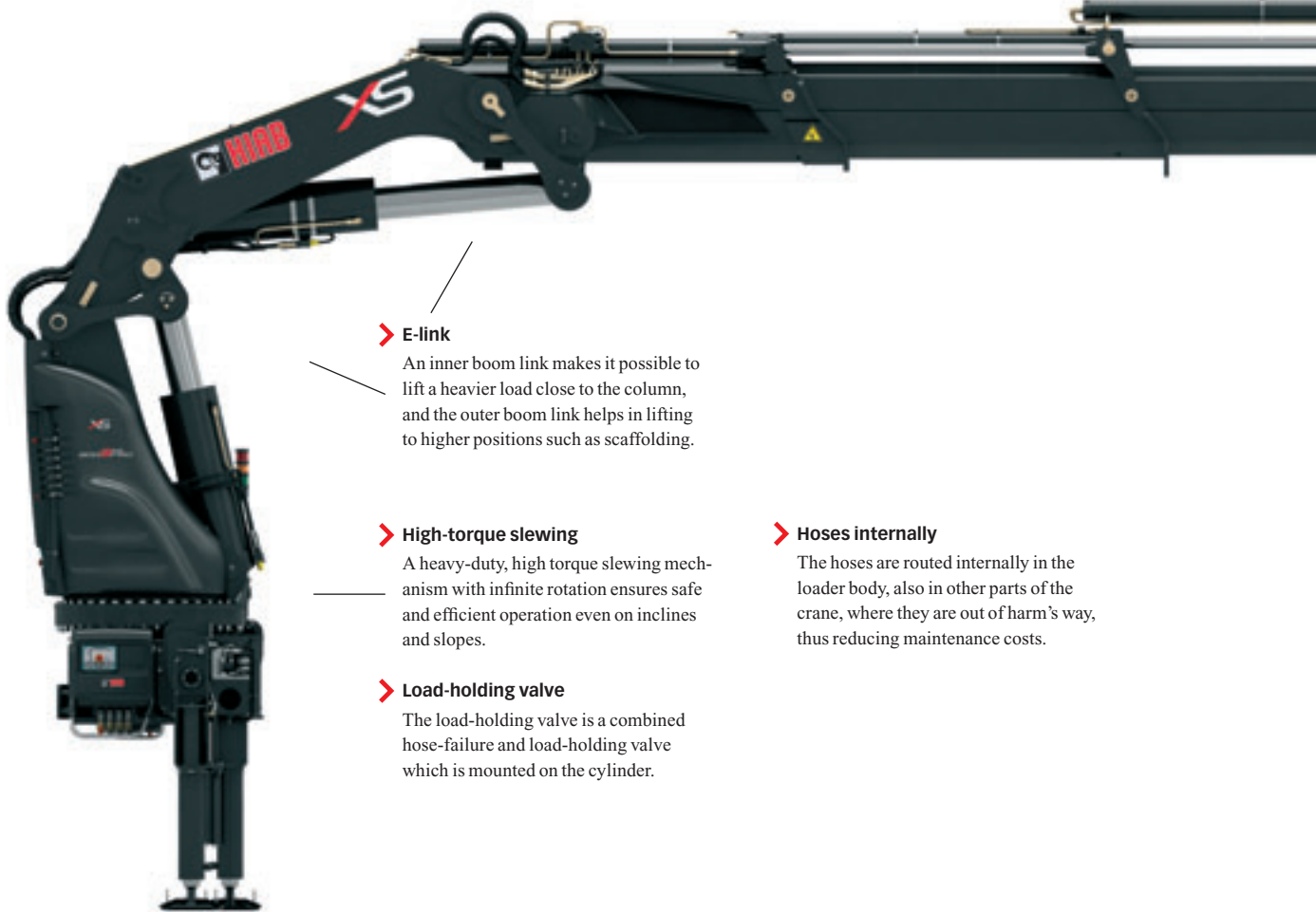


The HIAB XS 800 is majestic

The HIAB XS 800 is a crane that redefines the boundaries of truck crane performance. A crane that gives you more features, more power, more precision and ultimately, more productivity than any other crane in its class. It gives you a massive 77 tonne metre lifting capacity. Equipped with as many as 9 hydraulic extensions, it can reach out as far as 22.4 metres. And a 9 metre stabilizer span augmented by sophisticated electronic safety and stability management systems, ensures dependable, sure-footed performance even in the most demanding applications. The crane is delivered with the HiPro control system, featuring the Valve 91 and the SPACE 5000 intelligence system. This will provide you with an unrivalled loader crane, a truly exceptional crane.

> X-function

Angling the outer boom upwards relative to the inner boom gives greater accessibility in confined spaces.



> E-link

An inner boom link makes it possible to lift a heavier load close to the column, and the outer boom link helps in lifting to higher positions such as scaffolding.

> High-torque slewing

A heavy-duty, high torque slewing mechanism with infinite rotation ensures safe and efficient operation even on inclines and slopes.

> Load-holding valve

The load-holding valve is a combined hose-failure and load-holding valve which is mounted on the cylinder.

> Hoses internally

The hoses are routed internally in the loader body, also in other parts of the crane, where they are out of harm's way, thus reducing maintenance costs.

➤ **JIC couplings**

JIC couplings are standard on most Hiab cranes. They assure easy and secure coupling, and are still very simple to disconnect for service.

➤ **Hexagonal boom profile**

The hexagonal profile ensures the boom is always in perfect balance, thanks to its shape and its big support surface. The profile also minimizes boom deflection. This reduces maintenance costs and increases efficiency.



➤ **Side supports for stability**

Side supports fitted on each boom extension stabilize the boom laterally and minimize the play. This increases precision and is especially beneficial on boom systems with long outreach.

➤ **Large slide pads**

The hexagonal profile enables the use of larger slide pads. This makes the extensions move more smoothly and reduces mechanical wear on the boom.

➤ **Attachable tools**

A wide range of attachable tools are available for your Hiab crane. These make sure you can carry out a lot of different tasks.

HIAB **XS** 800 Capacity 77 tm

> **HiPro control system**

HiPro is simply the most advanced control system on the truck-crane market today, delivering unrivalled speed, precision and safety. This is achieved by combining the CombiDrive remote control, SPACE 5000 intelligence and Valve 91. Capacity is increased significantly by Automatic Speed Control (ASC). Pump Flow Distribution (PFD) maximizes productivity by ensuring super-smooth operation at all times.

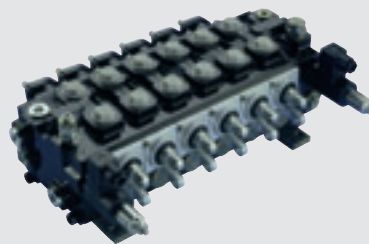
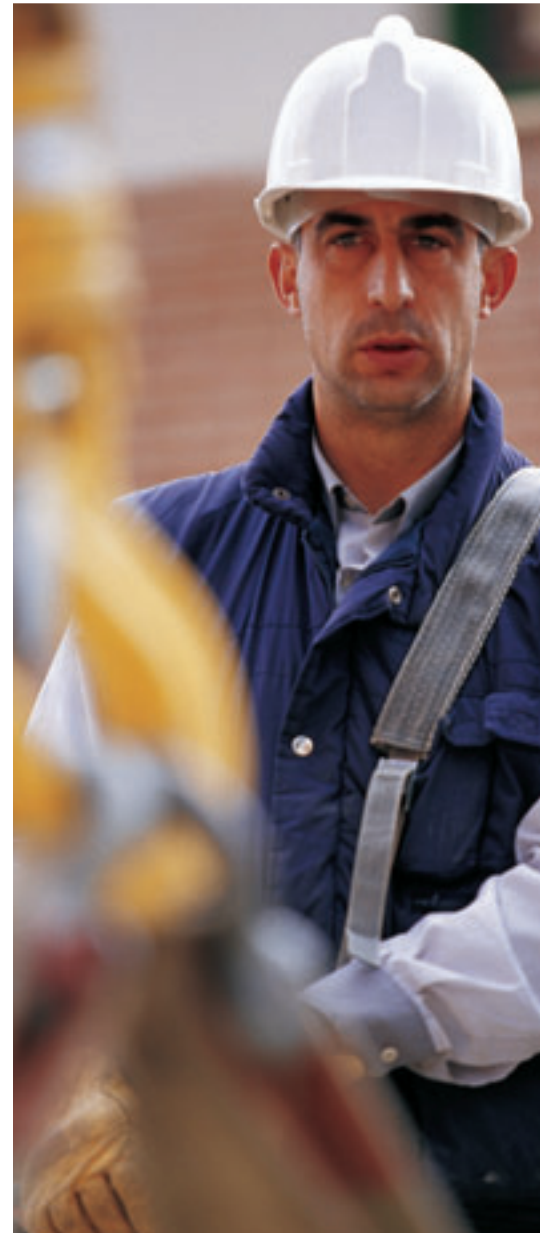
> **Valve 91**

The HIAB Valve 91 represents the pinnacle of hydraulic valve technology. It is load-sensing and pressure-compensated which improves both speed and precision. It features a long range of top class abilities, among one is that the same control lever movement always produces the same crane response, whether you are using one or more functions, with light or heavy load. The HIAB Valve 91 also allows for Pump Flow Distribution (PFD) which keeps the crane operating independently of the available oil flow. This keeps the lifting, winching and other crane functions running simultaneously at the same relative speed. The HIAB Valve 91 gives your crane the ability to be controlled with fingertip precision regardless of how far out the crane tip is, invaluable in confined spaces.

> **CombiDrive 5000**

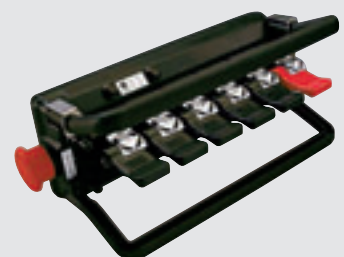
The HIAB CombiDrive 5000 control unit can handle up to 24 proportional functions. This means that optional equipment and accessories can all be controlled with the same precision. The unit can be operated wearing working gloves and it is very durable. The HIAB CombiDrive 5000 signal is transmitted by radio.

The weight of the control unit is 2.1 kg, including radio transmitter and a powerful battery.



> **Valve 91**

The HIAB Valve 91 represents the pinnacle of valve technology and handles very large oil throughputs. It is a closed-centre, pressure-compensated and load-sensing control valve. This provides the operator with a fingertip feel when controlling the crane.



> **CombiDrive 5000**

With the HIAB CombiDrive 5000 you can position yourself at the best possible location when operating the crane. It features 24 proportional functions for controlling the crane, optional equipment and accessories, all with the same precision.



HIAB XS 800 Capacity 77 tm

> SPACE 5000 intelligence system

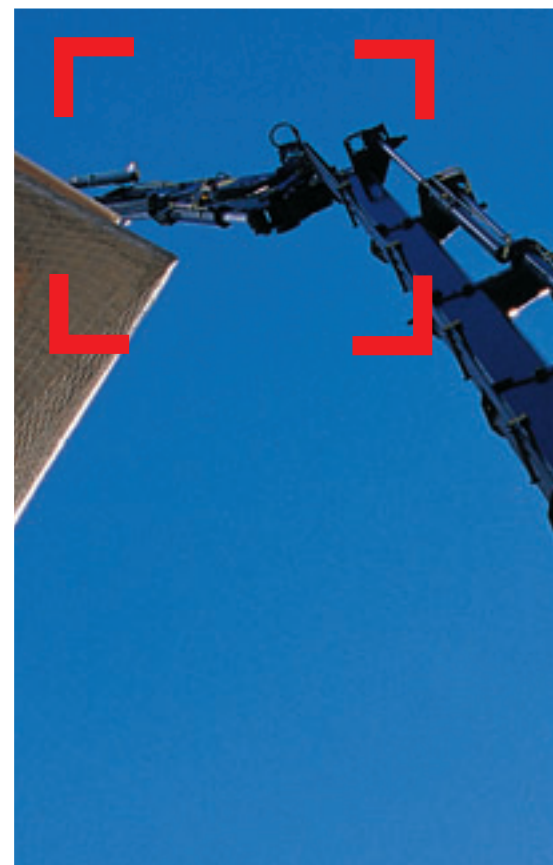
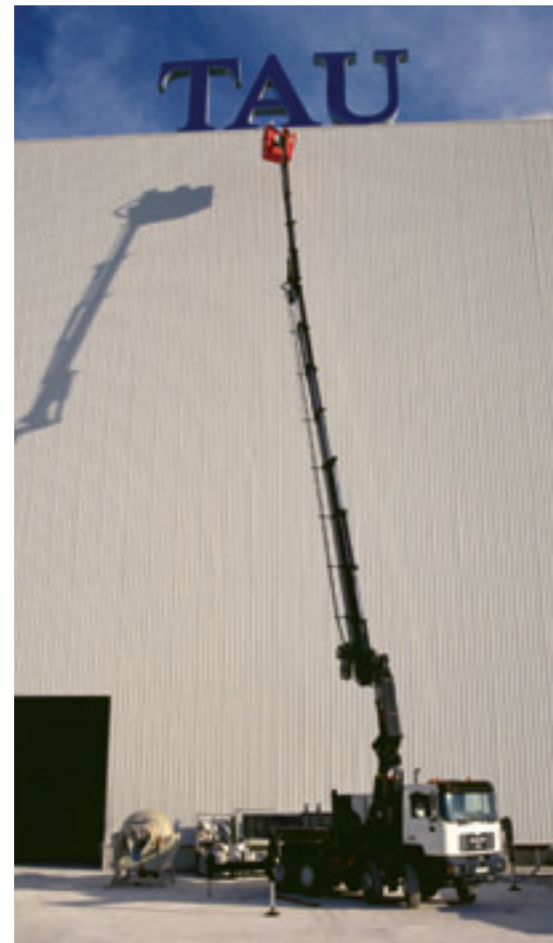
The SPACE 5000 intelligence system is designed to assist the operator in two kinds of ways, safety and productivity. On this model the safety functions include Over Load Protection (OLP) and High boom warning. While the Automatic Speed Control (ASC) and Pump Flow Distribution (PFD) keep up productivity. Service personnel can extract information such as fault codes and load cycle data from the system. The SPACE 5000 system is a part of the HiPro control system.

> Over Load Protection (OLP)

The Over Load Protection (OLP) system is designed on the principle that no crane movement should be brought to a complete halt without good cause, but equally there should be no compromise in operator safety. A movement is only stopped when there is a real risk of exceeding the crane's limits by continuing with that particular movement. Other movements, however, are allowed to continue as normal. OLP is very discreet, remaining invisible to the operator unless and until the system senses a potential problem hazard. When the crane reaches 90% of its maximum capacity, the operator is alerted, enabling him to take corrective action and carry on working. If a jib or winch is being used, OLP monitors the position and movements of this item as well.

> Automatic Speed Control (ASC)

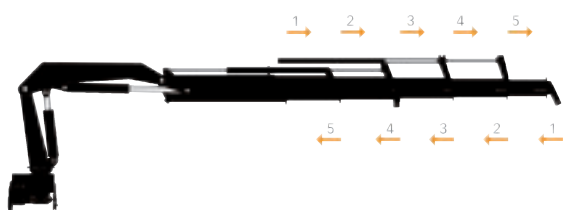
ASC gives a stepless increase in lifting capacity of up to 10%, all in one smooth, continuous, stepless motion. This feature, unique to Hiab, engages automatically, which means that the operator does not feel or notice a thing. The function activates as you reach the regular capacity limit, meaning that you can still lift the load where other cranes would have come to a complete stop. To compensate for the capacity boost, the speed of the inner and outer boom is slightly reduced. Capacity ceiling, safety and efficiency are significantly increased by this feature.



➤ Pump Flow Distribution (PFD)

Hiab cranes can handle the highest oil throughput in the market. But skilled crane drivers, able to operate several functions at the same time, want even more from their crane. And Hiab delivers, with PFD. In situations where the operator is working at the limits and using multiple functions simultaneously, even the largest pump may not be able to supply enough oil. This can result in the crane acting unpredictably, but not if your crane is equipped with PFD. This innovative system distributes the available oil in proportion to the operator's lever movements. All functions will continue to work just as expected with no disturbances or surprises although you require more oil flow than available. Once full oil flow is restored, it is full speed ahead once again.

PFD has proven extremely useful in practice. Even at an oil flow of 100 l/min, the system activates three times per load cycle during normal use. If you demand maximum convenience and productivity from your crane, you should not settle for less than a crane equipped with PFD.



➤ E-link

An E-link system is a kind of lever connection between the column and the inner boom, as well as the inner and the outer boom. This is beneficial when lifting heavy loads straight up to high positions, such as on scaffolding.

➤ Controlled extension and retraction sequence

A controlled sequence means that the extensions always move in the same order. Extracting and retracting the extensions in a controlled sequence means that the total weight is lower, this is of most importance on a long boom system.

➤ A jib takes you there

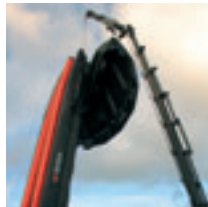
Mounting a jib on your crane provides easy access to remote areas. You can deliver your load all the way to the final destination, quickly and comfortably. Increased efficiency and versatility will make your business more profitable.

➤ High boom warning

When the pressure is on and you need to get to the next job fast, mistakes can happen. For example, if a driver forgets to park the crane, the consequences could be serious. In these situations, you'll appreciate a safety function like high boom warning. The SPACE system continuously monitors the boom position. If the crane is left in its upright position, an indicator lamp in the cabin will alert the driver before driving away.



World class **safety** and **capacity**

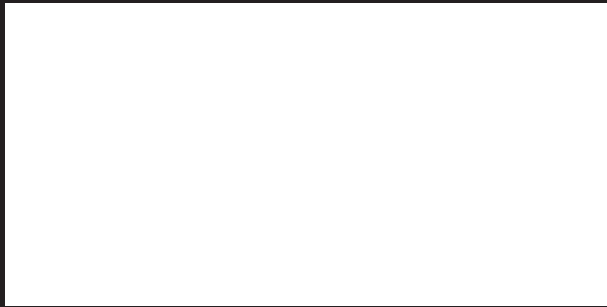


Operating your crane by remote control

The benefit of Hiab's remote control units ensures that the crane operator can be positioned at the best possible location when operating the crane. This leads to more efficient, comfortable work and also increases safety. A further spin-off effect is that you can be your own loading assistant due to the fact that you can position yourself next to the load, or wherever the loading assistant would be standing. Your tasks will be completed faster and at a lower cost.

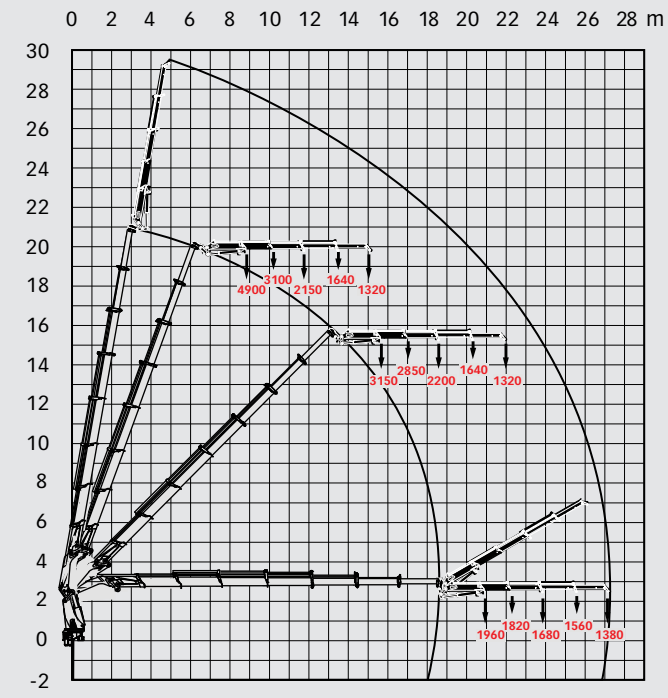
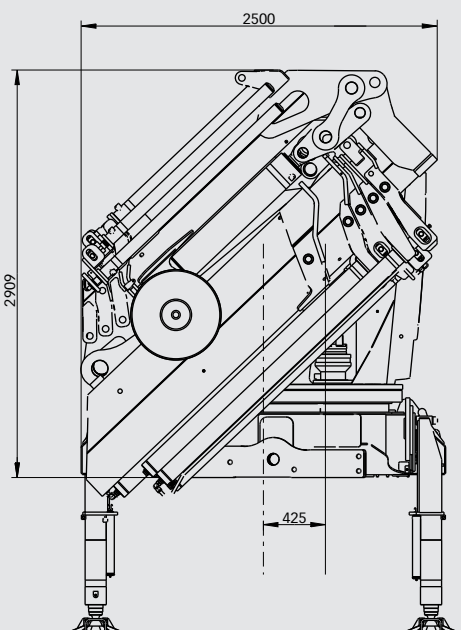
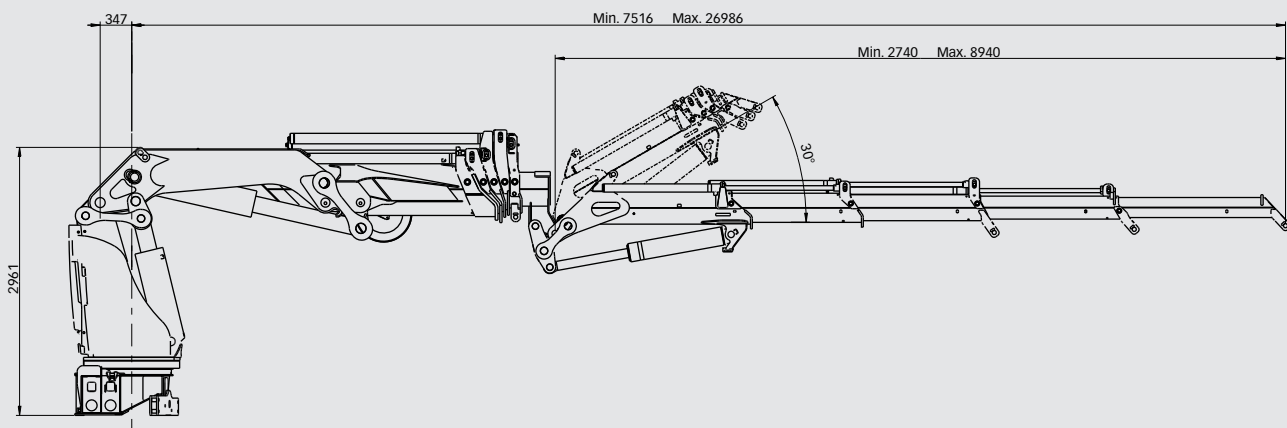
Design innovation – driven by you

Hiab is renowned throughout the world for its innovation and engineering excellence. The quality and reliability of our cranes are without equal in the truck loader market. But there is another crucial factor in our global success. We have a philosophy of listening and responding to the needs of those who matter most – the people who own and operate our cranes. The design and development of every crane we manufacture is customer-driven, this will definitely shine through in your Hiab loader crane.

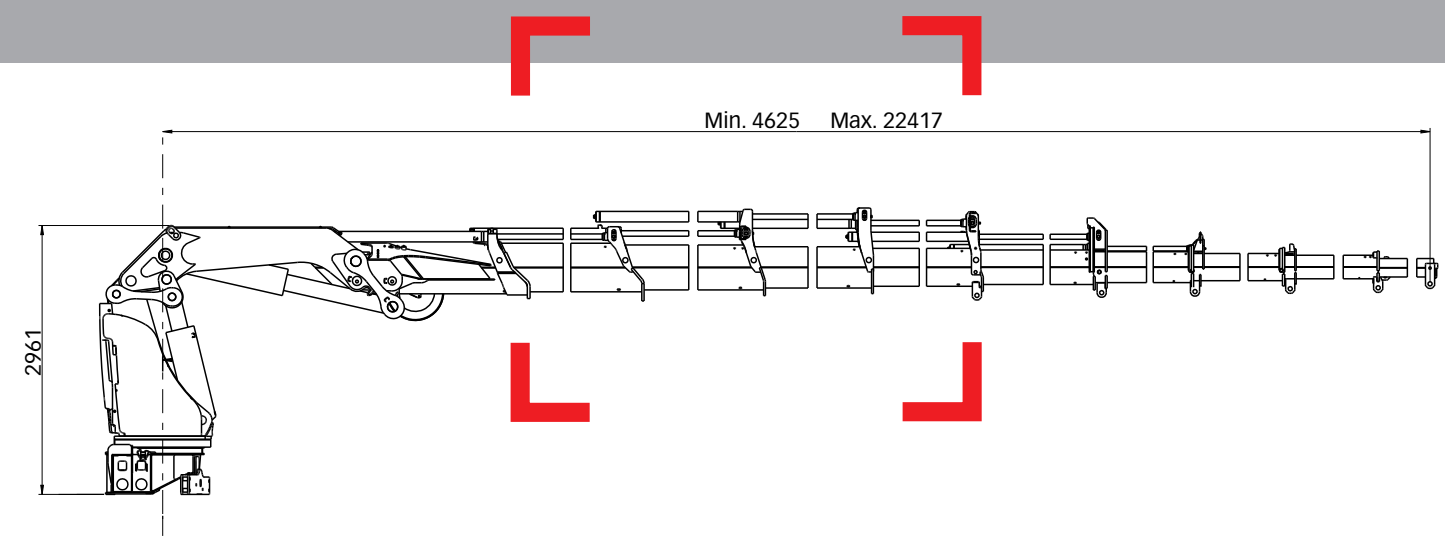


HIAB XS 800 Basic data

HIAB XS 800 E-7 jib 135X-4



HIAB XS 800 Capacity 77 tm



Basic data

Disclaimer
Hiab cranes have been built to meet the highest standards of safety and service life and have been thoroughly tested. Strength calculations for this model have been carried out in accordance with EN13001. Hiab's certified Quality Assurance System complies with the ISO 9001. Some of the items in our literature may be extra equipment. Certain applications may require an official permit. We reserve the right to change technical specifications without prior notice. Hiab cranes produced for EU-countries are CE-marked and comply with the European Standard EN 12999.

BD-800-EN-EU_071116

www.hiab.com



HIAB
 XS
 800
 Basic data

| Technical data | EP-5 HiPro | E-6 HiPro | E-7 HiPro | E-9 HiPro |
|--|-------------|-------------|-------------|-------------|
| Max. lifting capacity (kNm) | 716 | 703 | 696 | 689 |
| Outreach - hydraulic extensions (m) | 14.8 | 15.9 | 18.1 | 22.4 |
| Outreach - manual extensions (m) | - | - | - | - |
| Outreach - jib (m) | - | - | 27.0 | - |
| Outreach / lifting capacity (m / kg) | 3.9 / 18000 | 3.9 / 18000 | 3.8 / 18000 | 3.7 / 18000 |
| | 4.7 / 15500 | 4.3 / 16600 | 4.4 / 16100 | 4.6 / 15200 |
| | 6.3 / 11400 | 5.9 / 11800 | 6.0 / 11500 | 6.1 / 11100 |
| | 8.2 / 8600 | 7.7 / 8800 | 7.8 / 8500 | 7.9 / 8100 |
| | 10.2 / 6800 | 9.6 / 6900 | 9.7 / 6600 | 9.8 / 6300 |
| | 12.4 / 5500 | 11.6 / 5600 | 11.7 / 5300 | 11.8 / 5000 |
| | 14.7 / 4600 | 13.6 / 4700 | 13.7 / 4500 | 13.8 / 4100 |
| | - | 15.7 / 4100 | 15.8 / 3800 | 15.9 / 3500 |
| | - | - | 17.9 / 3300 | 18.0 / 3000 |
| | - | - | - | 20.1 / 2700 |
| | - | - | - | 22.2 / 2400 |
| Outreach / lifting capacity, with jib (m / kg) | - | - | 20.8 / 1960 | - |
| | - | - | 22.1 / 1820 | - |
| | - | - | 23.6 / 1680 | - |
| | - | - | 25.2 / 1560 | - |
| | - | - | 26.8 / 1380 | - |
| Slewing angle | ∞ | ∞ | ∞ | ∞ |
| Height in folded position (mm) | 2574 | 2488 | 2841 | 2488 |
| Width in folded position (mm) | 2500 | 2500 | 2510 | 2500 |
| Installation space needed (mm) | 1563 | 1647 | 1818 | 1678 |
| Weight - "standard" crane without stabilizers (kg) | 6390 | 6830 | 7195 | 7445 |
| Weight - stabilizer equipment (kg) | 1180 - 1315 | 1180 - 1315 | 1180 - 1315 | 1180 - 1315 |
| Weight - jib (kg) | - | - | 1000 | - |

HIAB XS 800 E-9 HiPro

